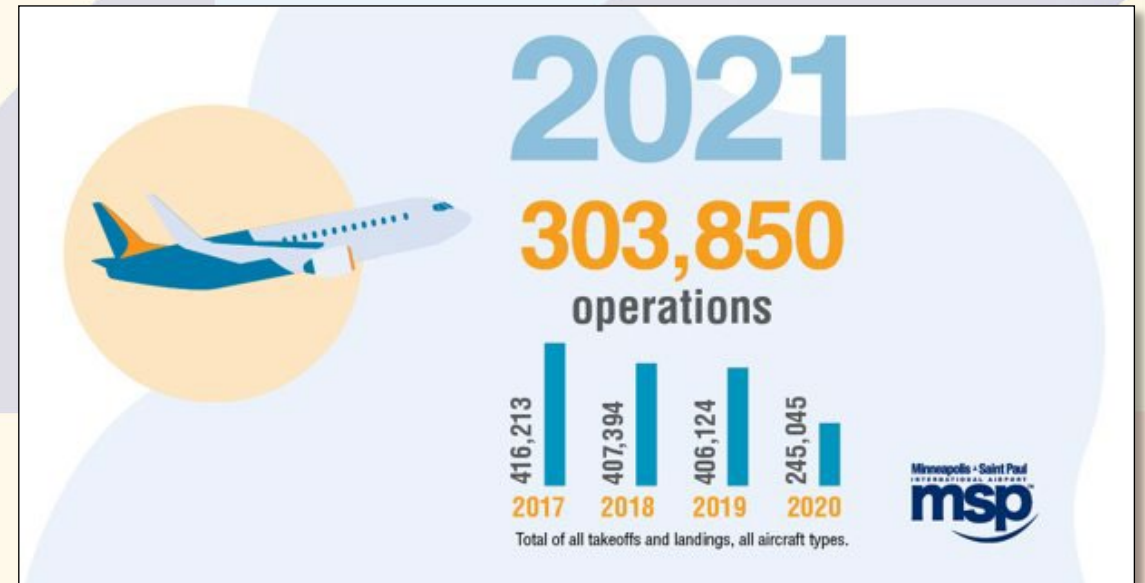


Recovering from the Pandemic

The COVID pandemic was far-reaching for the aviation industry as a whole



Recovering from the Pandemic, cont.

- U.S. airports had losses upward of \$40 billion between March 2020 and March 2022
 - MAC losses were \$215-\$220 million in 2020
- MAC took advantage of the lull in passengers to move certain projects ahead of schedule including:
 - Total reconstruction of the Terminal 1 roadway
 - Continuation of the Terminal 1 Ticketing and Baggage Claim renovations as part of the Operational Improvements program
 - G Concourse Expansion & Delta Skyclub



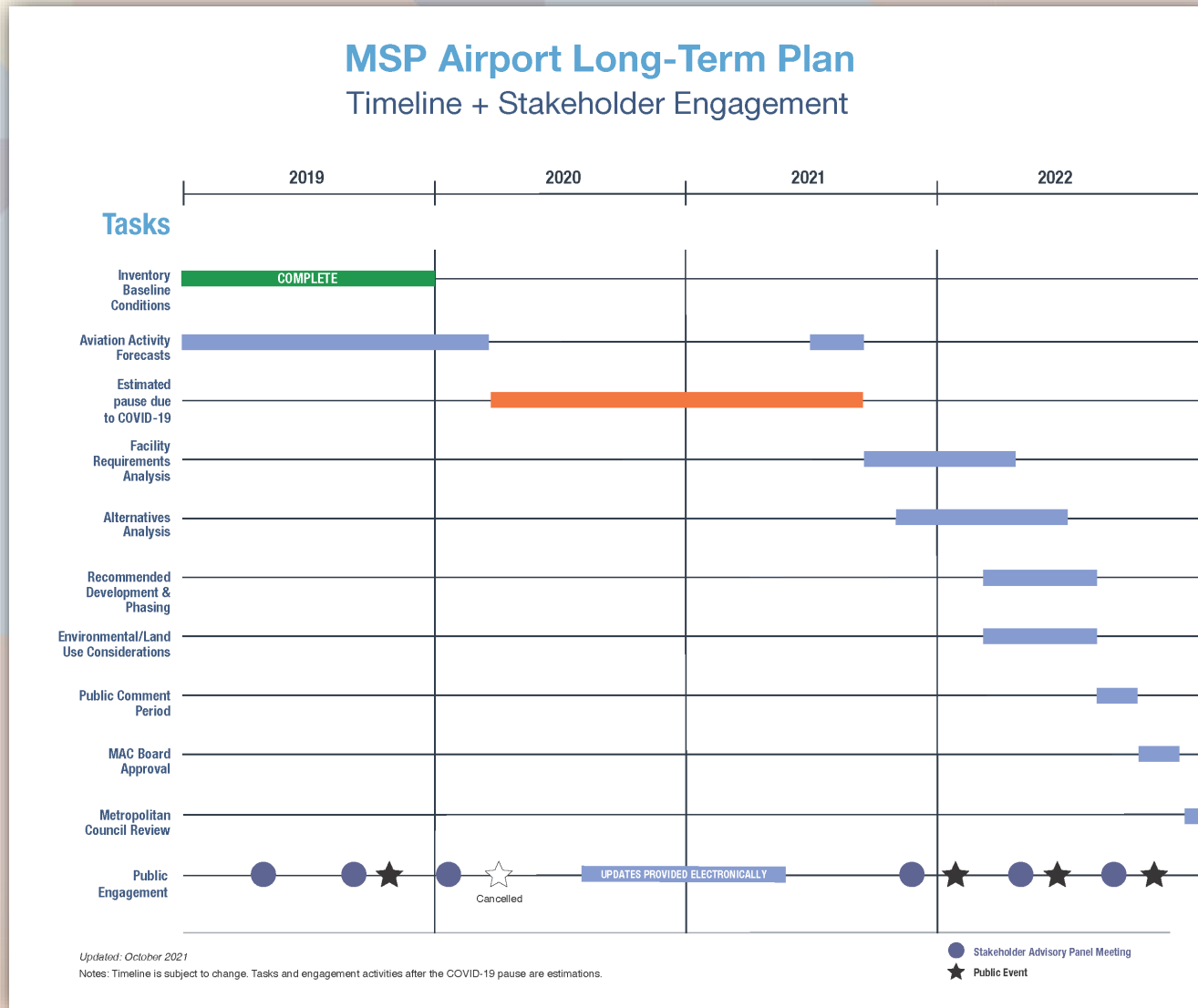
What is the Purpose of the Long-Term Plan?

- The LTP is a forward-looking planning tool that studies facility and infrastructure needs based on projected passenger and operations numbers
- The LTP looks ahead to the next 20 years

Goals for the MSP Long-Term Plan

- Plan for future facilities that will meet projected passenger activity levels in a manner that maintains and enhances customer service, while facilitating a seamless, “one-journey” experience.
- Produce a development plan that positions the MAC to meet future demand levels, enhances financial strength, leverages environmental stewardship, and infuses sustainable thinking.
- Conduct the planning process in a manner that includes meaningful stakeholder engagement.

Moving the MSP Long-Term Plan Forward



Areas of Focus

Baseline Existing Facilities

- Inventory and document existing facilities and aviation activity levels to establish baseline conditions

Forecasts

- Forecast MSP aviation activity levels (passengers, cargo, and aircraft operations) for the milestone years between 2020 and 2040

Facility Requirements (Gap Analysis)

- Determine any facility deficiency gaps between the baseline condition and desired future conditions based on forecasted activity levels

Development Concepts

- Develop and evaluate alternative means to remedy facility deficiencies identified through the process

Proposed Development

- Determine a proposed development program, funding plan, and implementation strategy to present to the community and the MAC board

Environmental Considerations

- Prepare an overview of environmental factors that should be taken into consideration when implementing the plan

Engaging with Stakeholders

- MAC engages with many different stakeholders including:
 - Internal staff
 - Airlines
 - Community
 - Public
 - Agencies
 - Regional Businesses
 - Tenant partners

Engaging with the Community

- These videos and upcoming virtual event are just a few ways for you to engage
- Engage in other ways:
 - The project website
 - Written updates in our e-newsletter

Public Input

- Our job is to listen to concerns, input, and aspirations shared by a wide range of stakeholders, including the public
- When possible, we can make changes to alternatives to reflect input we receive

Looking to the Finish Line

- Draft for public comment available late this summer
 - Subject to change and dependent on many factors
- Other public engagement opportunities to come with 2 more public events where we will share updates and receive input

Contact Us...

- Website
 - <https://www.msPAIRport.com/long-term-plan/contact>
- Email
 - MSPAairportLongTermPlan@msPmac.org